



INLINE FILTER

The FH SCANDINOX inline filter has wide applications and is used wherever necessary to remove particles from a flow, for example to protect a pump or other sensitive pieces of equipment. The FH SCANDINOX stainless steel inline filters offer efficient flow design, flexibility and quick and simple cleanup.

All parts that come into contact with products are produced in corrosion-resistant stainless steel, AISI 316L. The filter consists of a housing with an inlet and outlet. The filter is placed within the housing to force the flow through it. The filter cover is fixed in place with a ring clamp so that the sieve can easily be removed for cleaning.

The filter insert is delivered as standard with 1 mm and 2 mm holes or lined with stainless steel wire mesh, 250 my, and can also be supplied with another mesh size (MY) as ordered.

The FH SCANDINOX inline filter is supplied with a heating jacket and both double and single filters. The double filter is fitted with butterfly valves.

STANDARD DESIGN

IN-LINE FILTER - with heating jacket

All parts that come into contact with products are manufactured in corrosion-resistant steel AISI 316; other parts are manufactured in AISI 304.

IN-LINE FILTER - without heating jacket

All parts that come into contact with products are manufactured in corrosion-resistant stainless steel AISI 316; other parts are manufactured in AISI 304.

Filter Insert

The filter insert is available with 1 mm, 2 mm, 3 mm holes, or lined with a filtering mesh (150, 250 or 500my).

Flow Direction

Filter with insert of perforated plate:

Inlet at the bottom and outlet on the side of the filter.

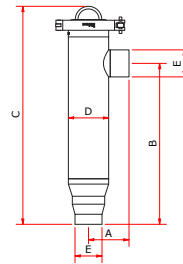
Filter with thread mesh:

Inlet on the side and outlet at the bottom of the filter.

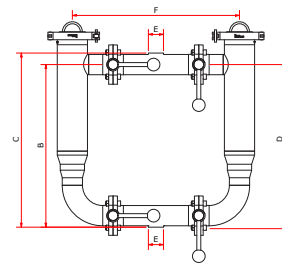
Order

The filter insert must be ordered separately.

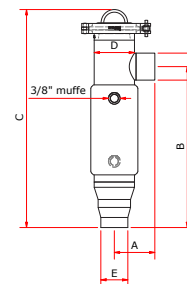
SINGLE FILTER BODY WITHOUT INSERT - without heating jacket								
Dim.	Art. Nr.	Item Nr.	A	B	C	D	E	
1½"	SCFS-9038	0600-1050	83	343	451	76,1	38	DS
2"	SCFS-9051	0600-1060	77	301	409	76,1	51	
2½"	SCFS-9063	0600-1070	93	340	453	101,6	63,5	
3"	SCFS-9076	0600-1080	114	301	414	101,6	76,1	



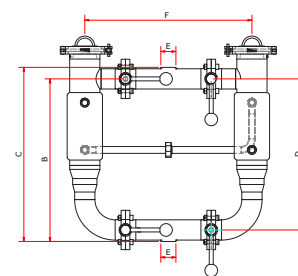
DOUBLE FILTER BODY WITHOUT INSERT - without heating jacket									
Dim.	Art. Nr.	Item Nr.	A	B	C	D	E	F	
1½"	SCFS-9038	0600-1052	545	407	436	378	38	421	DS
2"	SCFS-9051	0600-1062	545	407	436	378	51	421	
2½"	SCFS-9063	0600-1072	724	457	498	415	63,5	572	
3"	SCFS-9076	0600-1082	724	457	498	415	76,1	572	



SINGLE FILTER BODY WITHOUT INSERT - with heating jacket								
Dim.	Art. Nr.	Item Nr.	A	B	C	D	E	
1½"	SCFSH-9038	0600-1051	83	343	451	76,1	38	DS
2"	SCFSH-9051	0600-1061	77	301	409	76,1	51	
2½"	SCFSH-9063	0600-1071	93	340	453	101,6	63,5	
3"	SCFSH-9076	0600-1081	114	301	414	101,6	76,1	



DOUBLE FILTER BODY WITHOUT INSERT - with heating jacket									
Dim.	Art. Nr.	Item Nr.	A	B	C	D	E	F	
1½"	SCFDH-9038	0600-1053	545	407	436	378	38	421	DS
2"	SCFDH-9051	0600-1063	545	407	436	378	51	421	
2½"	SCFDH-9063	0600-1073	724	457	498	415	63,5	572	
3"	SCFDH-9076	0600-1083	724	457	498	415	76,1	572	



FILTER INSERT						
Dim.	Art. Nr.	Item Nr.	Hole size	D	E	
1½"	SCFI-9001	0600-1064	1 mm	330	57	
	SCFI-9002	0600-1065	2 mm			
	SCFI-9003	0600-1066	3 mm			
	SCFI-9025	0602-1063	150 my			
	SCFI-9025	0602-1064	250 my			
SCFI-9025	0602-1065	500 my				
2"	SCFI-9011	0600-1084	1 mm	330	80	
	SCFI-9012	0600-1085	2 mm			
	SCFI-9013	0600-1086	3 mm			
	SCFI-9026	0602-1083	150 my			
	SCFI-9026	0602-1084	250 my			
SCFI-9026	0602-1085	500 my				

